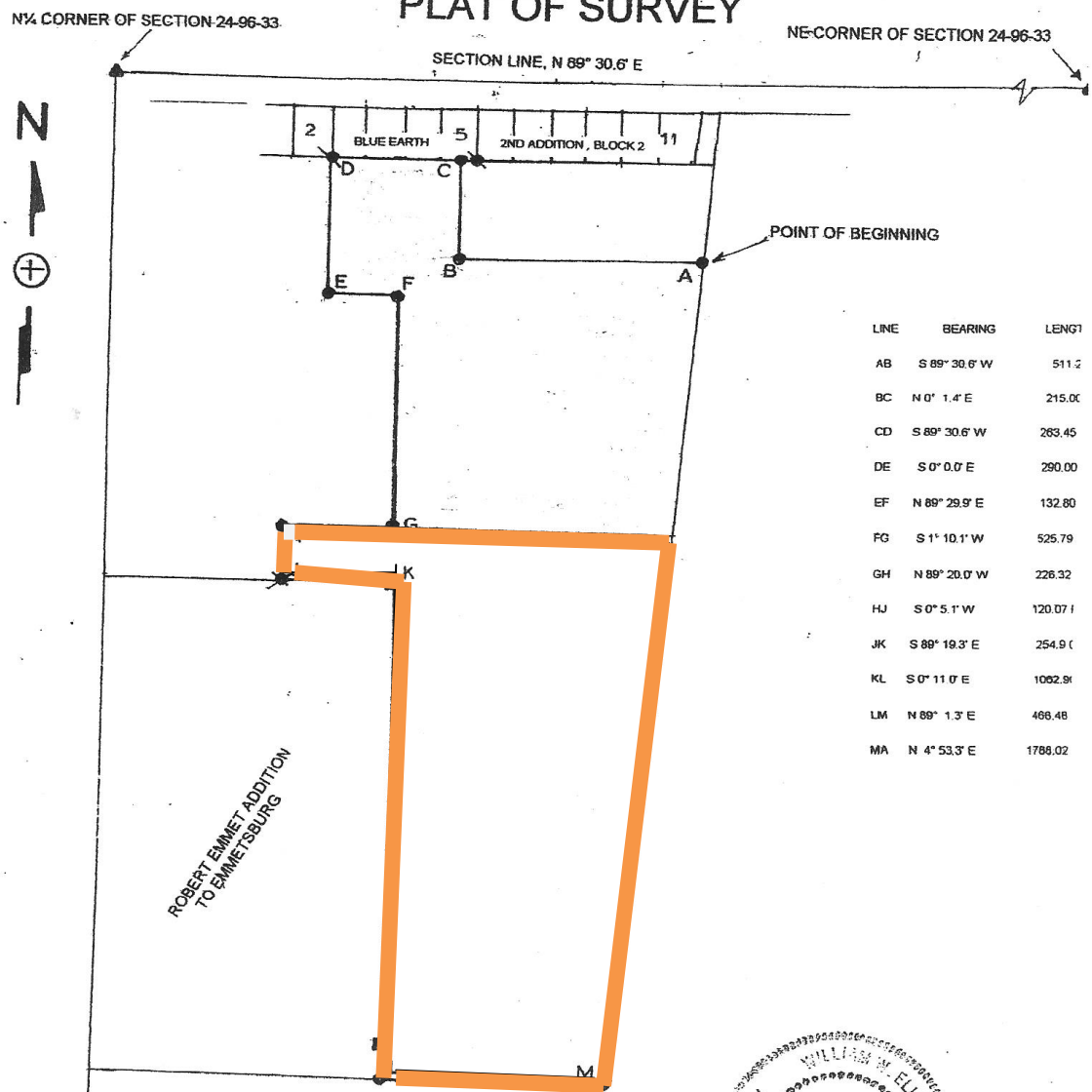


PLAT OF SURVEY



LINE	BEARING	LENGT
AB	S 89° 30.6' W	511.2
BC	N 0° 1.4' E	215.00
CD	S 89° 30.6' W	263.45
DE	S 0° 0.0' E	290.00
EF	N 89° 29.9' E	132.80
FG	S 1° 10.1' W	525.79
GH	N 89° 20.0' W	226.32
HJ	S 0° 5.1' W	120.07
JK	S 89° 19.3' E	254.90
KL	S 0° 11.0' E	1002.98
LM	N 89° 1.3' E	466.46
MA	N 4° 53.3' E	1788.02

LEGEND:

- FOUND CAPPED IRON ROD, 3869
- FOUND CAPPED IRON ROD, 3693
- FOUND IRON ROD IN CONCRETE
- FOUND IRON PIPE

0 100 250 500

SCALE 1" = 300'

