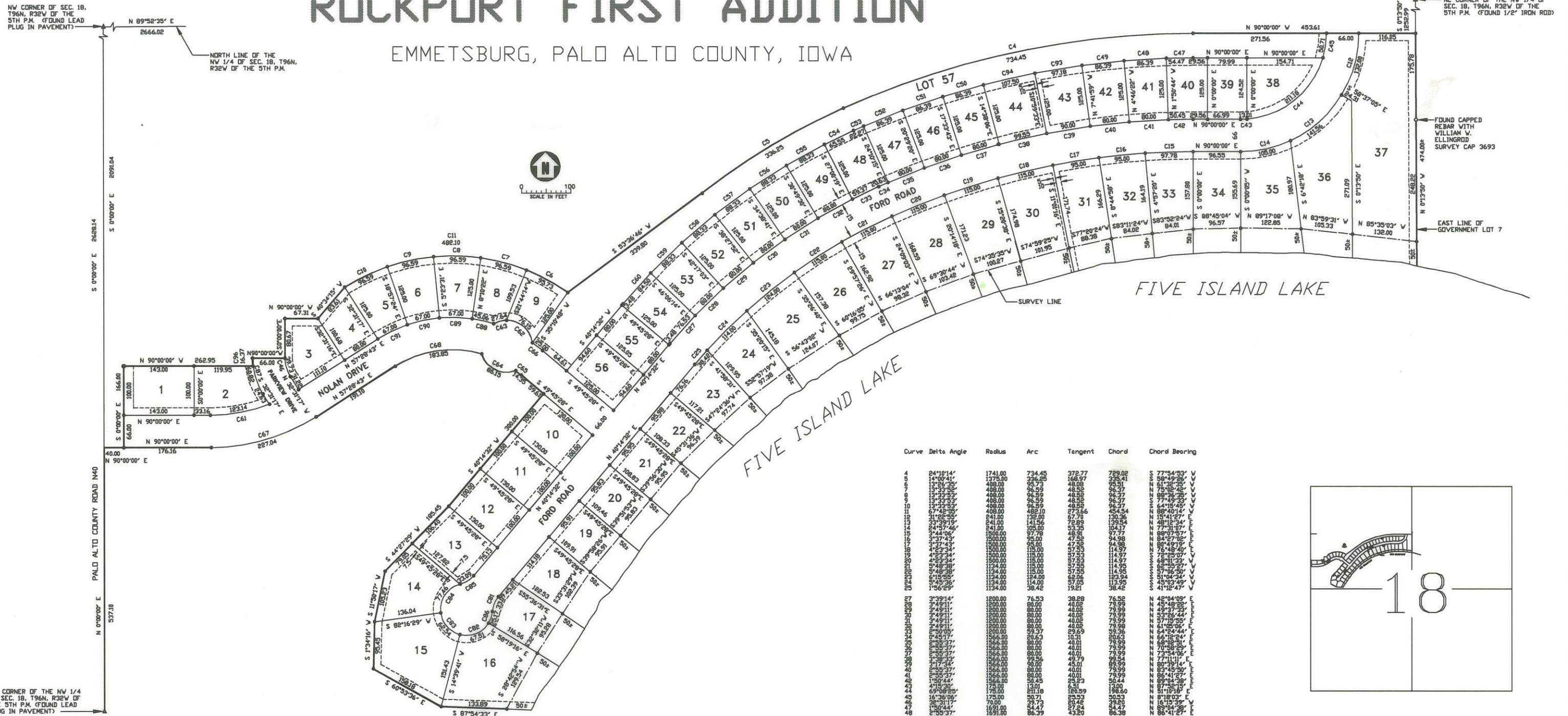


# ROCKPORT FIRST ADDITION

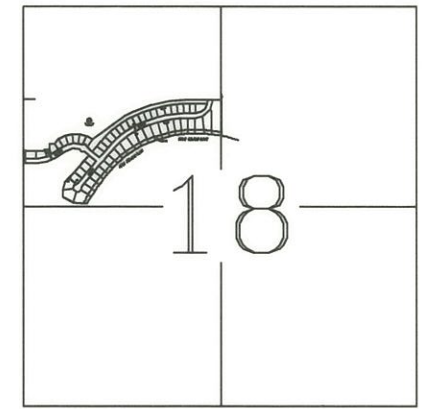
EMMETSBURG, PALO ALTO COUNTY, IOWA



Curve	Delta Angle	Radius	Arc	Tangent	Chord	Chord Bearing
4	24°19'14"	1741.00	734.45	378.77	729.02	77°54'53"
5	13°25'23"	488.00	95.73	48.08	94.51	61°32'33"
6	13°25'23"	488.00	95.73	48.08	94.51	75°02'48"
7	13°25'23"	488.00	95.73	48.08	94.51	88°17'24"
8	13°25'23"	488.00	95.73	48.08	94.51	77°49'33"
9	17°48'22"	488.00	123.66	62.10	123.66	88°40'14"
10	21°22'55"	241.00	132.00	67.78	130.36	15°41'27"
11	24°27'46"	241.00	105.00	53.35	104.17	77°31'07"
12	3°44'06"	1900.00	97.78	48.91	97.77	88°07'57"
13	3°37'43"	1900.00	97.78	48.91	97.77	84°27'08"
14	4°23'34"	1900.00	115.00	57.33	114.97	80°45'15"
15	4°23'34"	1900.00	115.00	57.33	114.97	76°48'49"
16	4°23'34"	1900.00	115.00	57.33	114.97	68°01'32"
17	4°23'34"	1900.00	115.00	57.33	114.97	55°36'59"
18	6°15'55"	1134.00	184.00	69.06	182.94	51°04'34"
19	6°15'55"	1134.00	184.00	69.06	182.94	43°03'49"
20	1°56'29"	1134.00	38.42	19.21	38.42	41°12'47"
21	3°39'11"	1200.00	76.52	38.28	76.52	N 42°04'09" E
22	2°49'11"	1200.00	88.00	40.02	79.99	N 45°48'29" E
23	2°49'11"	1200.00	88.00	40.02	79.99	N 49°37'23" E
24	2°49'11"	1200.00	88.00	40.02	79.99	N 53°26'17" E
25	2°49'11"	1200.00	88.00	40.02	79.99	N 57°15'11" E
26	2°49'11"	1200.00	88.00	40.02	79.99	N 61°04'05" E
27	0°45'17"	1966.00	206.23	10.31	206.23	N 66°12'24" E
28	2°49'11"	1200.00	88.00	40.02	79.99	N 69°50'59" E
29	2°49'11"	1200.00	88.00	40.02	79.99	N 73°39'53" E
30	2°49'11"	1200.00	88.00	40.02	79.99	N 77°28'47" E
31	2°49'11"	1200.00	88.00	40.02	79.99	N 81°17'41" E
32	2°49'11"	1200.00	88.00	40.02	79.99	N 85°06'35" E
33	2°49'11"	1200.00	88.00	40.02	79.99	N 88°55'29" E
34	2°49'11"	1200.00	88.00	40.02	79.99	N 92°44'23" E
35	2°49'11"	1200.00	88.00	40.02	79.99	N 96°33'17" E
36	2°49'11"	1200.00	88.00	40.02	79.99	N 100°22'11" E
37	2°49'11"	1200.00	88.00	40.02	79.99	N 104°11'05" E
38	2°49'11"	1200.00	88.00	40.02	79.99	N 108°00'00" E
39	2°49'11"	1200.00	88.00	40.02	79.99	N 111°48'54" E
40	2°49'11"	1200.00	88.00	40.02	79.99	N 115°37'48" E
41	2°49'11"	1200.00	88.00	40.02	79.99	N 119°26'42" E
42	2°49'11"	1200.00	88.00	40.02	79.99	N 123°15'36" E
43	2°49'11"	1200.00	88.00	40.02	79.99	N 127°04'30" E
44	2°49'11"	1200.00	88.00	40.02	79.99	N 130°53'24" E
45	2°49'11"	1200.00	88.00	40.02	79.99	N 134°42'18" E
46	2°49'11"	1200.00	88.00	40.02	79.99	N 138°31'12" E
47	2°49'11"	1200.00	88.00	40.02	79.99	N 142°20'06" E
48	2°49'11"	1200.00	88.00	40.02	79.99	N 146°09'00" E
49	2°49'11"	1200.00	88.00	40.02	79.99	N 149°57'54" E
50	2°49'11"	1200.00	88.00	40.02	79.99	N 153°46'48" E
51	2°49'11"	1200.00	88.00	40.02	79.99	N 157°35'42" E
52	2°49'11"	1200.00	88.00	40.02	79.99	N 161°24'36" E
53	2°49'11"	1200.00	88.00	40.02	79.99	N 165°13'30" E
54	2°49'11"	1200.00	88.00	40.02	79.99	N 169°02'24" E
55	2°49'11"	1200.00	88.00	40.02	79.99	N 172°51'18" E
56	2°49'11"	1200.00	88.00	40.02	79.99	N 176°40'12" E
57	2°49'11"	1200.00	88.00	40.02	79.99	N 180°29'06" E
58	2°49'11"	1200.00	88.00	40.02	79.99	N 184°18'00" E
59	2°49'11"	1200.00	88.00	40.02	79.99	N 188°06'54" E
60	2°49'11"	1200.00	88.00	40.02	79.99	N 191°55'48" E
61	2°49'11"	1200.00	88.00	40.02	79.99	N 195°44'42" E
62	2°49'11"	1200.00	88.00	40.02	79.99	N 199°33'36" E
63	2°49'11"	1200.00	88.00	40.02	79.99	N 203°22'30" E
64	2°49'11"	1200.00	88.00	40.02	79.99	N 207°11'24" E
65	2°49'11"	1200.00	88.00	40.02	79.99	N 211°00'18" E
66	2°49'11"	1200.00	88.00	40.02	79.99	N 214°49'12" E
67	2°49'11"	1200.00	88.00	40.02	79.99	N 218°38'06" E
68	2°49'11"	1200.00	88.00	40.02	79.99	N 222°27'00" E
69	2°49'11"	1200.00	88.00	40.02	79.99	N 226°15'54" E
70	2°49'11"	1200.00	88.00	40.02	79.99	N 230°04'48" E
71	2°49'11"	1200.00	88.00	40.02	79.99	N 233°53'42" E
72	2°49'11"	1200.00	88.00	40.02	79.99	N 237°42'36" E
73	2°49'11"	1200.00	88.00	40.02	79.99	N 241°31'30" E
74	2°49'11"	1200.00	88.00	40.02	79.99	N 245°20'24" E
75	2°49'11"	1200.00	88.00	40.02	79.99	N 249°09'18" E
76	2°49'11"	1200.00	88.00	40.02	79.99	N 252°58'12" E
77	2°49'11"	1200.00	88.00	40.02	79.99	N 256°47'06" E
78	2°49'11"	1200.00	88.00	40.02	79.99	N 260°36'00" E
79	2°49'11"	1200.00	88.00	40.02	79.99	N 264°24'54" E
80	2°49'11"	1200.00	88.00	40.02	79.99	N 268°13'48" E
81	2°49'11"	1200.00	88.00	40.02	79.99	N 272°02'42" E
82	2°49'11"	1200.00	88.00	40.02	79.99	N 275°51'36" E
83	2°49'11"	1200.00	88.00	40.02	79.99	N 279°40'30" E
84	2°49'11"	1200.00	88.00	40.02	79.99	N 283°29'24" E
85	2°49'11"	1200.00	88.00	40.02	79.99	N 287°18'18" E
86	2°49'11"	1200.00	88.00	40.02	79.99	N 291°07'12" E
87	2°49'11"	1200.00	88.00	40.02	79.99	N 294°56'06" E
88	2°49'11"	1200.00	88.00	40.02	79.99	N 298°45'00" E
89	2°49'11"	1200.00	88.00	40.02	79.99	N 302°33'54" E
90	2°49'11"	1200.00	88.00	40.02	79.99	N 306°22'48" E
91	2°49'11"	1200.00	88.00	40.02	79.99	N 310°11'42" E
92	2°49'11"	1200.00	88.00	40.02	79.99	N 314°00'36" E
93	2°49'11"	1200.00	88.00	40.02	79.99	N 317°49'30" E
94	2°49'11"	1200.00	88.00	40.02	79.99	N 321°38'24" E
95	2°49'11"	1200.00	88.00	40.02	79.99	N 325°27'18" E
96	2°49'11"	1200.00	88.00	40.02	79.99	N 329°16'12" E

- LEGEND
- SET 1/2" REBAR WITH SURVEY CAP
  - FOUND CAPPED REBAR WITH WILLIAM V. ELLINGROD SURVEY CAP NO. 3693
  - PERPETUAL UTILITY EASEMENT, WIDTH AS SHOWN

Mylar copy sent to Palo Alto County Auditor - Text was set to finer number than this copy.



CERTIFICATE:  
 I HEREBY CERTIFY THAT THIS ENGINEERING DOCUMENT AND/OR LAND SURVEYING DOCUMENT WAS PREPARED BY ME OR UNDER MY DIRECT PERSONAL SUPERVISION AND THAT I AM A DULY LICENSED PROFESSIONAL ENGINEER AND LICENSED LAND SURVEYOR UNDER THE LAWS OF THE STATE OF IOWA.  
 LARRY R. NELSON P.E. & L.S. No. 5388  
 MY LICENSE RENEWAL DATE IS DECEMBER 31, 1999.  
 THIS PAGE COVERED BY THIS SEAL.

ROCKPORT FIRST ADDITION			KRUSE, CATE & NELSON, P.C.		
MEDIUM LAKE DEVELOPMENT CORPORATION			ENGINEERING SERVICES		
EMMETSBURG, IOWA 50536			IOWA		
REVISIONS					
DATE	ITEM	APP.			
APP. BY LRN		SCALE	AS SHOWN	DRWG NO.	
DRWN.		DATE	JULY 19, 1999	1429-114	